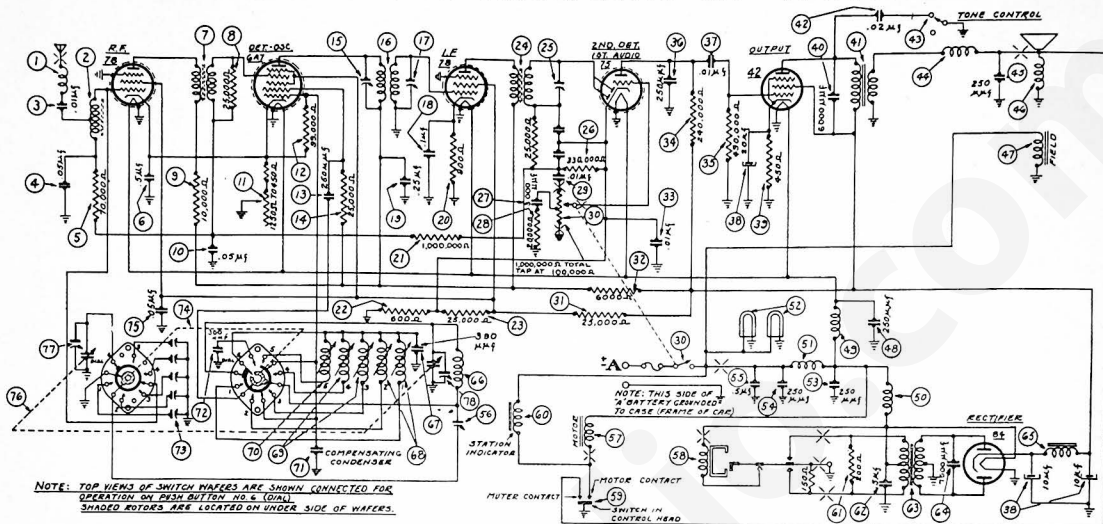


MODEL F-1640

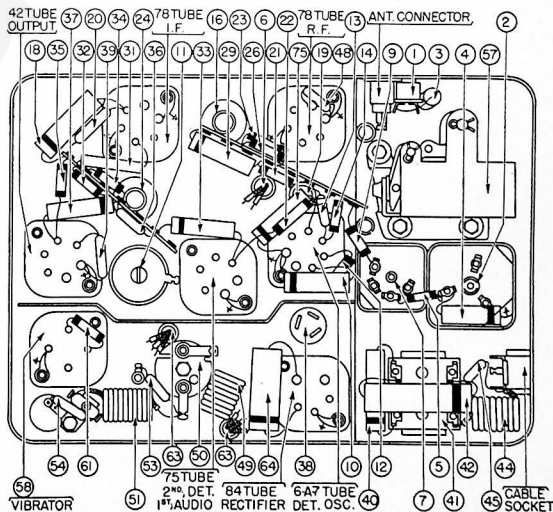
MODEL F-1640 SCHEMATIC I.F. = 470KC



Aligning Procedure will be found on page 174.

PARTS LIST

No.	Description	Part No.	No.	Description	Part No.
1	Antenna Choke	32-1956	42	Condenser (.02 mfd.)	30-4495
2	Antenna Transformer	65-0079	43	Tone Control Switch	32-1406
3	Condenser (.01 mfd.)	61-0014	44	Choke	32-1561
4	Condenser (.05 mfd.)	30-4560	45	Condenser (250 mmfd.)	30-1032
5	Resistor (70,000 ohms)	33-370337	46	Cone & Voice Coil	31-0042
6	Condenser (.5 mfd.)	61-0035	47	Field Coil (Not Replaceable)	31-0042
7	R. F. Transformer	65-0083	48	Condenser (250 mmfd.)	30-1032
8	Resistor (25,000 ohms)	33-325337	49	Filament Choke	32-1604
9	Resistor (10,000 ohms)	33-310337	50	Vibrator Choke	32-2537
10	Condenser (.05 mfd.)	30-4444	51	"A" Choke	32-2477
11	Sensitivity Control	33-5264-4	52	Pilot Lamp	34-2040
12	Resistor (99,000 ohms)	33-399337	53	Condenser (250 mmfd.)	61-0033
13	Condenser (250 mmfd.)	61-0034	54	Condenser (250 mmfd.)	61-0033
14	Resistor (25,000 ohms)	33-325437	55	Condenser (.5 mfd.)	30-4474
15	Padder (Pri. 1st I. F. Trans.)	65-0002	56	Low Frequency Padder	33-0017
16	Padder (Sec. 1st I. F. Trans.)	30-4122	57	Impulse Motor	77-0148
17	Condenser (.25 mfd.)	61-0036	58	Vibrator	41-3398
18	Resistor (900 ohms)	33-190438	59	Automatic Control Switch	77-0171
19	Resistor (1,000,000 ohms)	33-510437	60	Control Mechanism Coil	33-120347
20	Resistor (600 ohms)	33-160438	61	Resistor (200 ohms)	30-4565
21	Resistor (25,000 ohms)	33-325437	62	Condenser (.5 mfd.)	30-4565
22	Second I. F. Transformer	65-0003	63	Power Transformer	65-0018
23	Padder (Sec. 2nd I. F. Trans.)	33-433337	64	Condenser (7,500 mmfd.)	30-4567
24	Condenser (3,000 mmfd.)	30-4469	65	Filter Choke	65-0022
25	Resistor (20,000 ohms)	33-320337	66	Oscillator Transformer	65-0052
26	Condenser (.1 mfd.)	30-4479	67	Silver Cup Condenser	61-0031
27	Volume Control (1,000,000 ohms) & On-Off Switch	67-0008	68	(300 mmfd.)	61-0003
28	Resistor (25,000 ohms)	33-325437	69	Antenna Padder Assy.	77-0035
29	Resistor (6,000 ohms)	33-200337	70	Wafer Switch Assy.	77-0185
30	Condenser (.01 mfd.)	30-4479	71	Condenser (.05 mfd.)	30-4569
31	Filter Condenser (10-10-20 mfd.)	61-0028	72	Tuning Condenser	63-0015
32	Resistor (450 ohms)	33-145437	73	First Padder (on Tun. Cond.)	63-0015
33	Condenser (6,000 mmfd.)	30-4024	74	Second Padder (on Tun. Cond.)	63-0015
34	Output Transformer	65-0077	75	Call Letter Kit	81-0091



No.	Description	Part No.	No.	Description	Part No.
76	Flexible Shaft	57-0425	81	"Tee" Bolt (Rec. Mtg.)	28-6161
77	Dial Assembly	85-0052	82	Nut (Rec. Mtg.)	WS18
78	Push Button Knob	55-0196	83	Hook Bolt (Control Mtg.)	87-0043
79	Tuning Control Knob	55-0234	84	Nut (Control Mtg.)	87-0043
80	Volume Control Knob	55-0233	85	Antenna Lead	95-0063

The letter "P" is stamped on the left end of the housing near the top cover on all Ford Philco Model F-1640 Radios.